

LOWER DUWAMISH WATERWAY UPPER REACH

# Cleanup Construction News

LOWER DUWAMISH  
WATERWAY GROUP



[Visit our website](#) / [Sitio web](#) / [Trang web](#) / [គេហទំព័រ](#)

## Cleanup Construction Update

The Lower Duwamish Waterway Group (LDWG) has completed the second season of construction in the two most upstream miles (called the upper reach) of the Lower Duwamish Waterway Superfund site. With the completion of Season 2 construction, the upper reach cleanup is about **65% complete**. The final construction season for this reach starts October 2026.

### Lower Duwamish Waterway Sediment Cleanup Upper Reach By the Numbers

#### Progress To Date: Seasons 1 and 2

#### 80,000 Cubic Yards

Since fall 2024, LDWG has removed nearly **80,000 cubic yards** of contaminated sediment from the waterway...



...filling **1,129 railcars**.



Since the start of upper reach construction, crews completed

#### 17 of 26

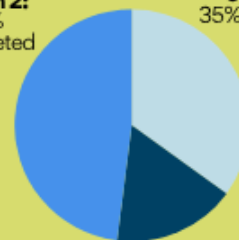
sediment management areas



#### Upper Reach Cleanup is now 65% Complete

Season 2:  
48%  
Completed

Season 3:  
35% Remaining



Season 1:  
17% Completed

In the design process, we define specific areas that require cleanup, called Sediment Management Areas (SMAs). In seasons 1 and 2, cleanup was completed at 17 of 26 SMAs, with the remaining work to be finished in Season 3. See the map of cleanup areas [here](#)

[Map of cleanup areas](#)

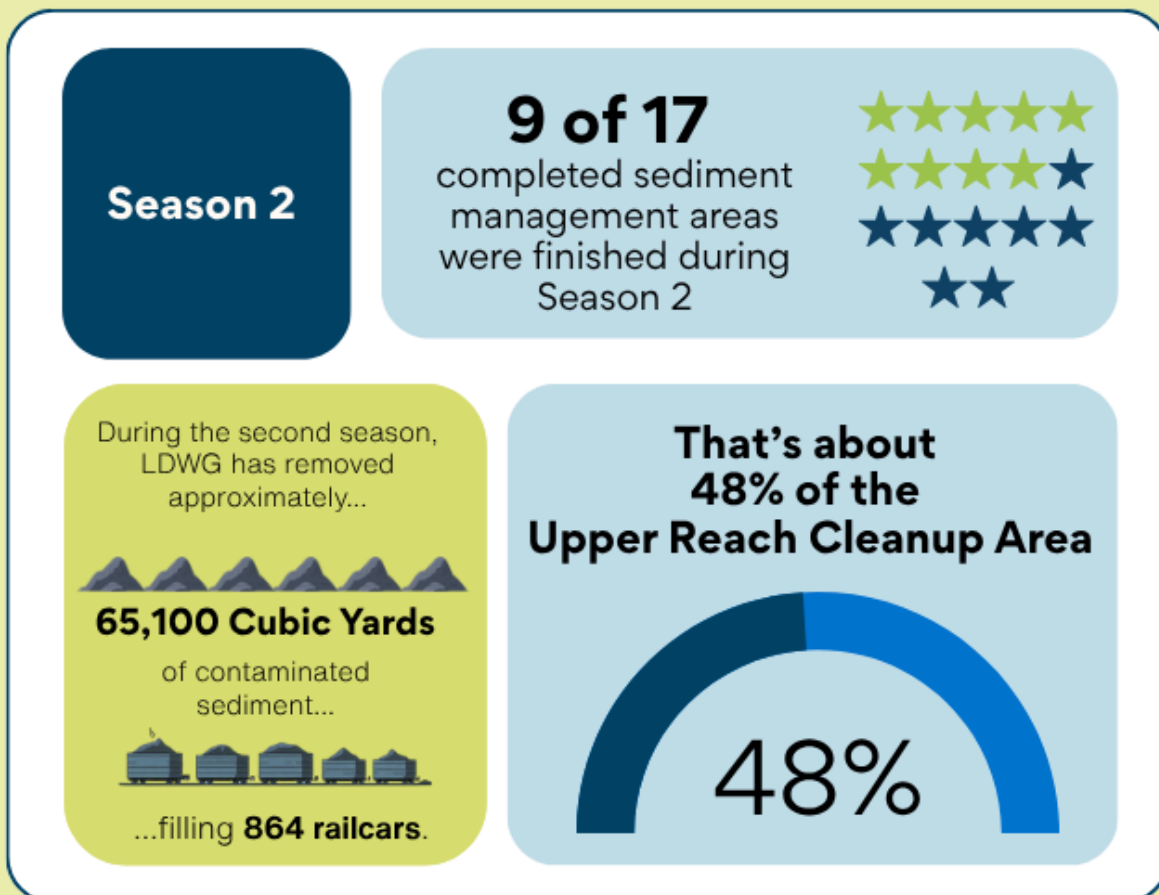
LDWG's members, King County, the City of Seattle, and The Boeing Company, want to thank you for your continued patience during construction as we continue this important cleanup.

For questions or concerns, you can always reach our team at [info@ldwg.org](mailto:info@ldwg.org) or 1-888-561-LDWG (1-888-561-5394). Visit [LDWG.org](https://www.ldwg.org) for the most up-to-date information.

## Construction Season 2 Recap

During the second construction season, construction teams removed approximately **65,100 cubic yards** of contaminated sediment, **filling 864 rail cars**. Cleanup was completed in nine SMAs: 7, 9, 11A, 13, 14A, 14C, 14D, 15A, 15B, and a small section of SMA 16. Most of the cleanup was also completed for SMAs 12A and 12B. This is about **48% of the upper reach cleanup areas**.

With approval by the U.S. Environmental Protection Agency (EPA), the second construction season was extended to March 4. This extension was necessary to install an engineered cap in SMA 12B following dredging. The engineered cap covered remaining contaminated sediments in SMA 12B with layers of sand, gravel, and rock to contain and isolate the contamination. Other SMAs during Season 2 were dredged and covered with clean material or were covered with clean material to enhance natural recovery. Learn more about how we clean up the river on our website's [How we cleanup the river](#) page.



Compared to the first season, Season 2 cleanup activities were more visible near the South Park Bridge, homes, and parks in the area. At times, construction required nighttime work and full closure of the South Park Bridge. We recognize that this work can impact transit, traffic, vessels, and businesses. We appreciate your patience.

Throughout the season, our outreach team provided multiple ways for the community to reach out to us. Through our phone line, in-person events, and email inbox we heard from people during Season 2 about the following:

- Feedback and questions about the dates and time of day for the overnight South Park Bridge closures.
- One noise complaint when nighttime dredging occurred near homes.
- Questions and concerns about odor the community experienced in fall 2025. The odor in this case was determined to be unrelated to LDWG's cleanup activities.

- Questions about recreational vessel access during construction, including rowing and paddling.
- A question about noise related to a non-LDWG project underway next to the river.
- A concern about large wake coming off construction boats around South Park Marina near the cleanup activities.
- General questions about opportunities to volunteer.
- General partnership opportunities from businesses or students in the community.

## What's next?

Construction in the upper reach will resume in October 2026 and continue into February 2027 for the third and final season. In-water construction activities are limited to these months to protect certain fish species.

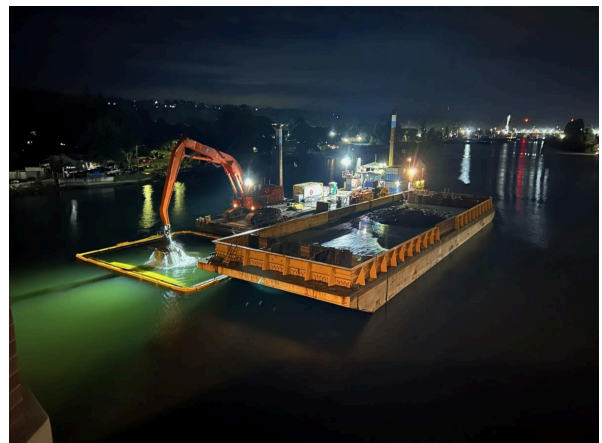
For the middle reach, cleanup design is underway, with construction expected to begin in fall 2028. The lower reach, closest to Harbor Island, is in the pre-design phase.

After 2027, LDWG will return to the upper reach to address one remaining area of sediment cleanup. Design for this area is being completed as part of the middle reach design. Construction will start after the Boeing Isaacson Thompson cleanup site located next to this area has completed a cleanup action to control the source of contamination in the area.

## Season 2 Photo Highlights



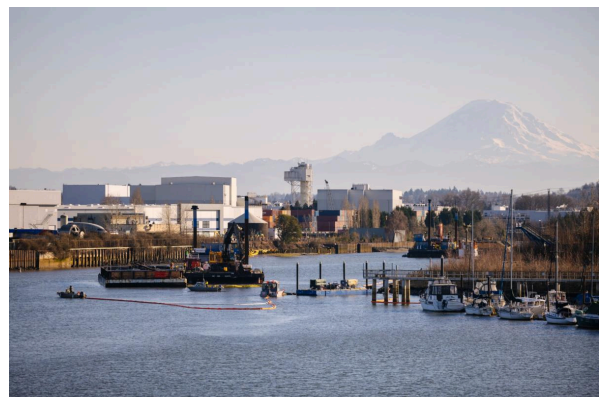
*Dredging operations at SMA 9 with Mount Rainier in the background (January 16, 2026, Geosyntec).*



*Nighttime dredging at SMA 15A during the week of September 29 (Geosyntec).*



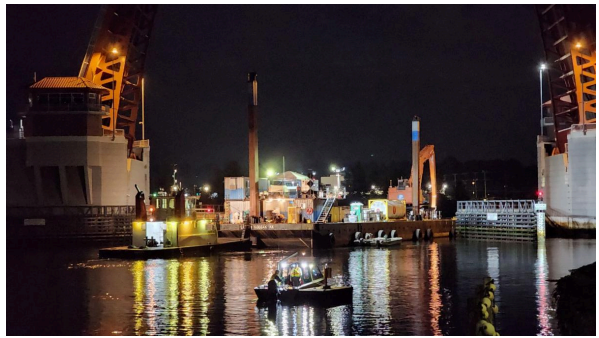
*Crews collect water samples to confirm that dredging is conducted in compliance with water quality standards. (Geosyntec, 2026)*



*Dredging at SMA 12B with sheen capture and management equipment actively adjusting to respond to sheen observations (King County, January 23, 2026).*



The contractor placing clean material for cap at SMA 12B, after dredging is complete. (King County, February 2026).



Crews working in SMA14D during the night on October 3. The South Park Bridge is raised to accommodate tugboats, barges, and dredging equipment. (Geosyntec, 2025).

## Stay Connected!

For questions or concerns, you can always reach our team at [info@ldwg.org](mailto:info@ldwg.org) or 1-888-561-LDWG (1-888-561-5394). Visit [LDWG.org](http://LDWG.org) for the most up-to-date information.



Visit LDWG website



Send us an email



Visit EPA website

Stay informed during cleanup construction!

Visit our website

Manténgase informado durante toda la actividad de construcción para la limpieza

Sitio web

Cập nhật thông tin trong quá trình thi công để dọn dẹp

Trang web

ទទួលបានការជូនដំណឹងអំឡុងពេលការសាងសង់សម្រាប់ការសម្អាត

គេហទំព័រ

Give us a call at 1-888-561-5394

LDWG | [info@ldwg.org](mailto:info@ldwg.org) | Seattle, WA 98108 US

[Unsubscribe](#) | [Update Profile](#) | [Constant Contact Data Notice](#)



Try email marketing for free today!